

Intelligent Play.

making sport smart.



The world's smartest sports field.

Intelligent Play is the smart revolution for your pitch. Using our patented technology based on artificial intelligence, the usage of the turf surface is analyzed in real time and can thus be optimized in the best possible way. And all this with just two powerful sensors.

A quantum leap for the operation and usage of sports facilities.

+2 years
longer service life for your sports field.



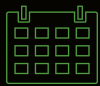
All important information
at a glance.



Play better.

Best playing conditions at all times.

Thanks to precise real-time data on turf quality.



Last longer.

Extended service life of the sports field.

Thanks to automated maintenance recommendations.



Play safer.

Minimal risk of injury.

By identifying exposed areas.



Be greener.

Maximum sustainability.

Through efficient maintenance, increased productivity and extended turf life.



How does it work?



Advanced hardware.

2 AI sensors to cover the entire field.

Patented technology.

Using artificial intelligence and machine learning.

Wireless connection.

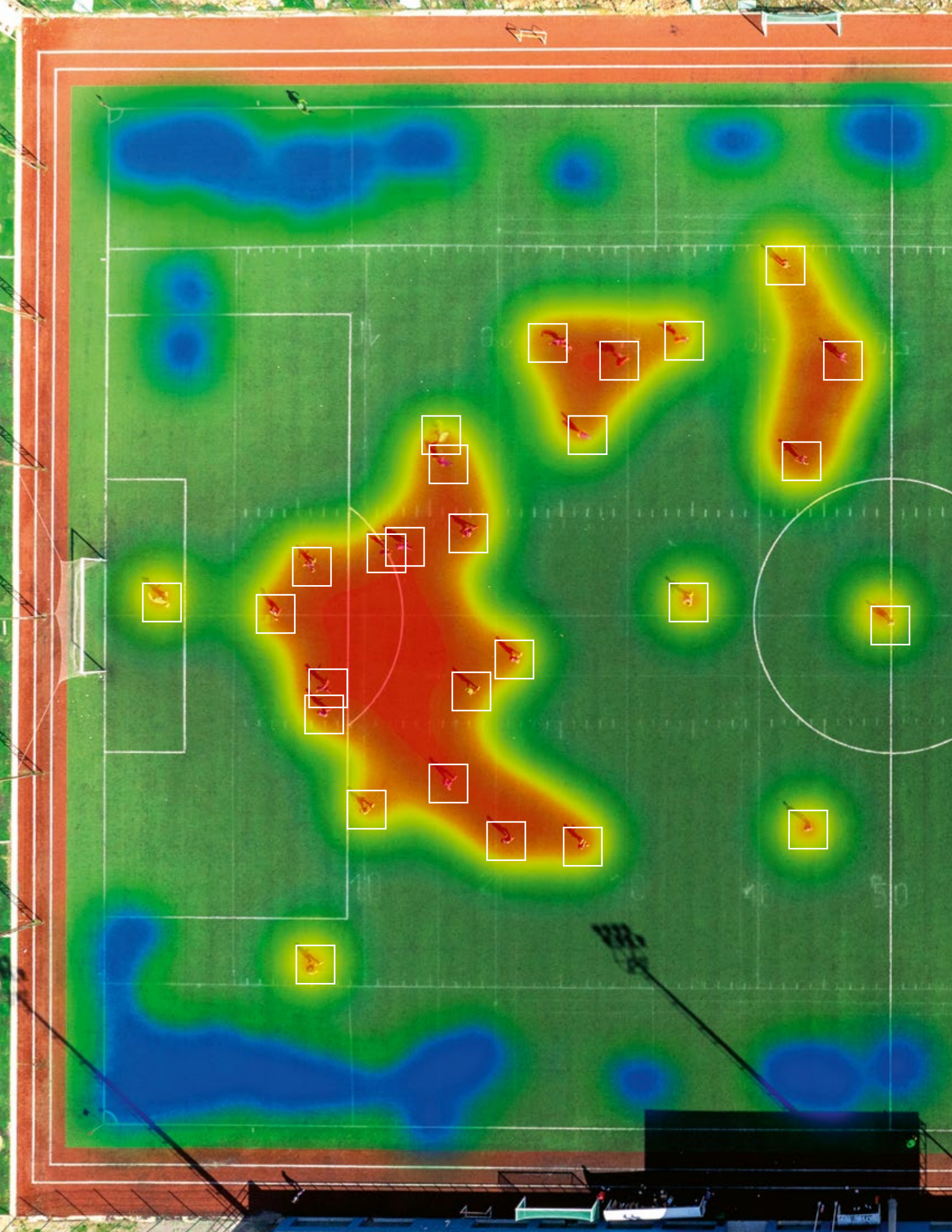
Thanks to the integrated SIM card during the service life.

Easy installation.

Can also be retrofitted to existing lighting systems.

Comprehensive insights.

With personal dashboard and automated monthly reports.





Know what's happening on the sports field – in real time.

With your dashboard, you stay in control of your facility's performance and optimize the playing field thanks to real-time monitoring and user-friendly tools.

Usage overview

Field heatmap

Maintenance schedule

Snapshot view

Generate custom
reports

Security alerts

Maintenance alerts

Weather forecast

[More information on the next page.](#)

A comprehensive dashboard with all functions.

In our dashboard, all data is processed in real time and presented clearly – individually customizable at any time.

Usage overview:

How many players are on the pitch? How long and when? Are there any unauthorized persons on the premises? You can find all the answers in the usage overview.

Flexible usage models:

Track at which time of the week your facility is the most popular – the ideal basis for flexible pricing models when renting to other clubs.

Field testing:

Schedule tests and save measurement data from the sports field centrally to ensure quick and easy access.

Custom reports:

Create your own personalized report and have it sent to you automatically.

...and many more insights.

See for yourself.

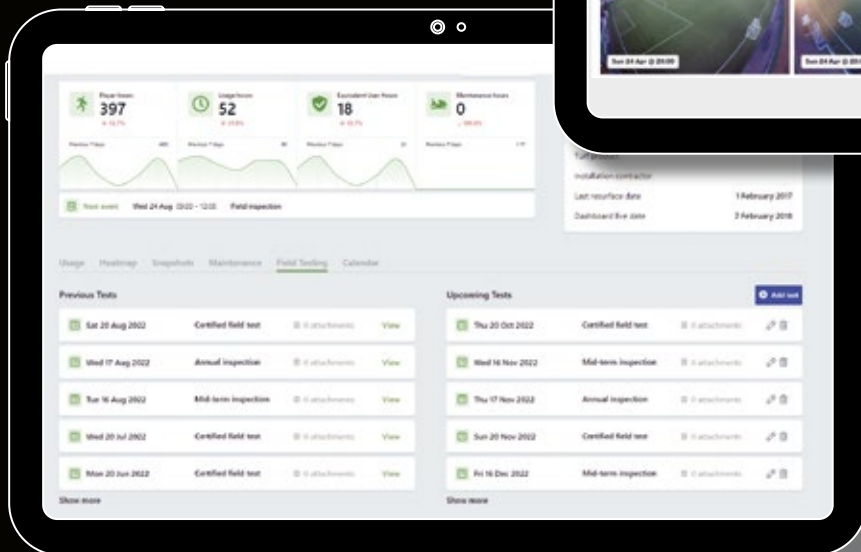
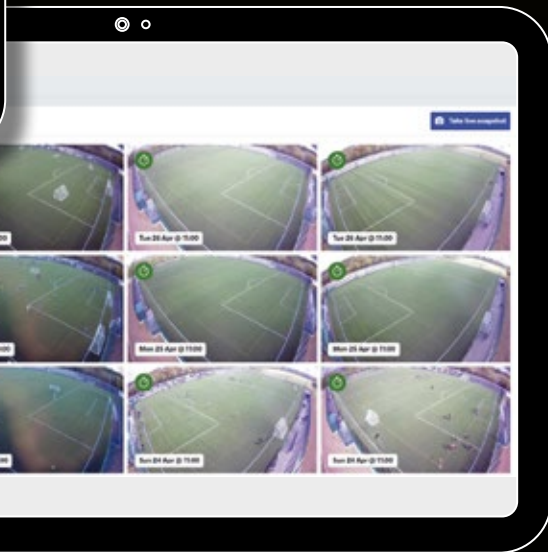
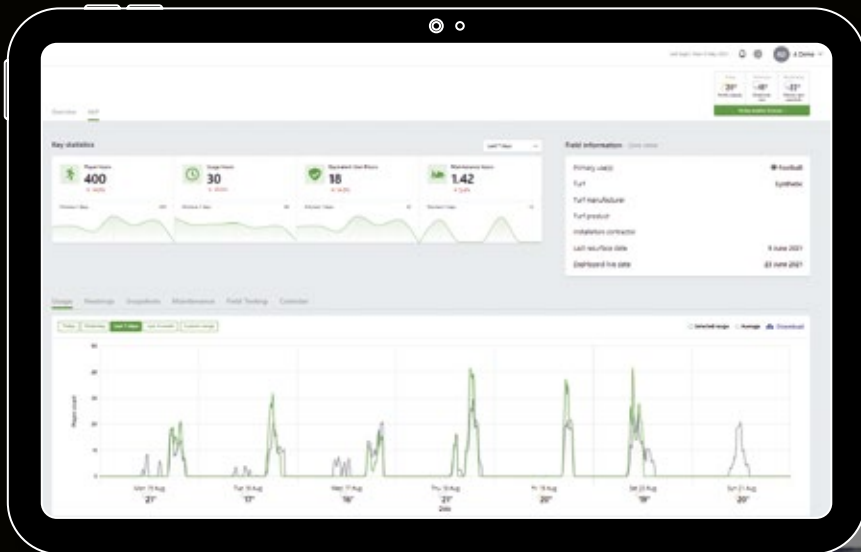
Always with you:

The dashboard is also available on your phone or tablet.



Book your product demonstration now.
Free of charge and without obligation.





Create report | **Generate report**

Select a preset: [Dropdown]

Report Title: [Text input]

Select date range: [Presets: This week, This month, Last 3 weeks, Last 3 months, Last 12 months, Week to date, Month to date, Quarter to date, Year to date, Custom range]

Days & Times: [Checkboxes: Monday, Tuesday, Wednesday, Thursday, Friday, Saturday, Sunday] | [Time range: 00:00 - 00:00]

Report areas: [Checkboxes: Player hours, Player count, Usage hours, Rain, Machine maintenance hours, Machine maintenance records, Weather, Higher participation day, Lower participation day, Resilience, Inequality, Field usage]

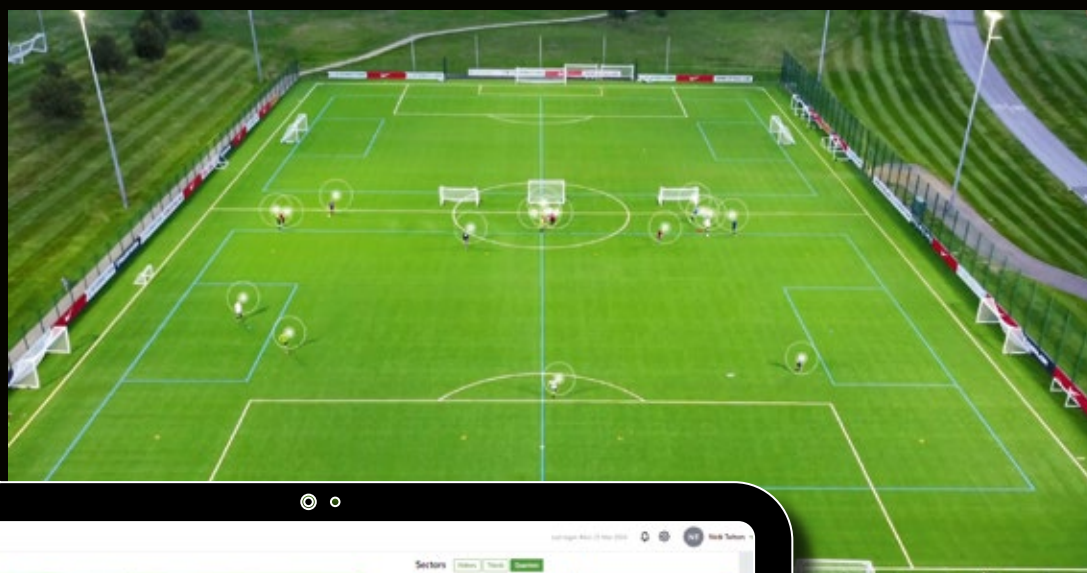
Fields to include: [Dropdown]

Optimize field usage – through proactive maintenance.

Based on the agreed maintenance schedule, or when triggered by increased usage, automatic maintenance alerts through Intelligent Play will notify you when machine maintenance is required and the extent of the work needed.

After completing the maintenance, an updated heatmap helps track the effectiveness of the activity.

Additionally, a calendar and manual tasks are available to assist your team in planning and executing a comprehensive maintenance program.



Field heatmaps:

Enable highly exposed areas to be identified, maintained and repaired.



Regular turf care and even distribution of infill material through routine maintenance.

You know best that this is the key to player safety, turf longevity, and optimal performance.

Your savings potential with Intelligent Play.

Calculation example for construction, conversion, and maintenance costs for an artificial turf pitch.

	Standard maintenance	Optimized maintenance with Intelligent Play
Construction costs*	650,000 € – 800,000 €	
Ongoing maintenance costs*		
Maintenance costs / year	10,710 € – 17,850 €	7,497 € – 12,495 €
Maintenance costs / 10 years	107,100 € – 178,500 €	74,970 € – 124,950 €
Reinvest after 8 or 10 years		
Removal and recycling/disposal of the old artificial turf surface	50,000 €	Postponed by > 2 years due to optimized usage and maintenance
Procurement of new artificial turf surface	250,000 € – 350,000 €	

* Cost estimates are based on DFB guidelines for artificial turf construction and maintenance (1.50 € to 2.50 € per m²) for a playing surface of approx. 7,140 m² (105 × 68 m in accordance with FIFA specifications).

Save up to
50,000 €
on maintenance costs.

+2 years
longer use.

Invest up to
400,000 €
later.





Atlanta Public Schools

Atlanta, Georgia, USA

Atlanta Public Schools (APS) is a public school district in Atlanta, Georgia, serving over 50,000 students across approximately 90 schools. APS is offering a variety of athletic opportunities for students across its middle and high schools. When Jasper Jewell first heard about Intelligent Play, he knew the system would be the ideal solution to help him manage the Atlanta Public Schools sports field at Grady Stadium.

“ The convenience and benefits are unbeatable. It significantly extends the lifespan of your field. And above all, it makes your life as an athletic director much easier. ”

Jasper Jewell, Athletic Director Atlanta Public Schools

Mercedes-Benz Stadium

Atlanta, Georgia, USA

The Mercedes-Benz Stadium in Atlanta – home to the Atlanta Falcons (NFL) and Atlanta United FC (MLS), venue for unforgettable sporting moments and a wide range of major events.

“

Making turf usage visible based on data and gaining an overview of heavily used areas – that's music to my ears.

”

Nick Pappas, Field Manager, Mercedes-Benz Stadium







R

BIG

RUTGERS

1869 THE BIRTHPLACE OF

R

SH STADIUM



Rutgers University

New Brunswick, New Jersey, USA

Rutgers, the Birthplace of College Football, began playing at the site of SHI Stadium in November 1938. SHI Stadium is home to the Scarlet Knights who compete in the Big Ten Conference.



Intelligent Play is a huge win for us. The technology allows us to complete our daily tasks for the team much more efficiently.



**Matthew Colagiovanni, Rutgers University, Athletics Deputy,
Athletics Director, Internal Operations and Capital Projects**

Siteco GmbH

Georg-Simon-Ohm-Str. 50
83301 Traunreut, Germany
Phone +49 8669 330
sports@siteco.com

Intelligent Play.

Play better. Last longer. Be greener.